

Leader in Sustainability

Enercom Dallas
April 2022



Message from our CEO and Founder

 **SPEED** = ESG+ 



Long-Term Value Proposition



Proven Track Record 2009-2021
Oil and Gas Production: CAGR 16%



Leading Oil and Gas Finders
Drilling Success Rate* 75+% (2006 – 2021)



Low-Cost Operator
Operating and Structure Costs
Per Barrel Below Peers



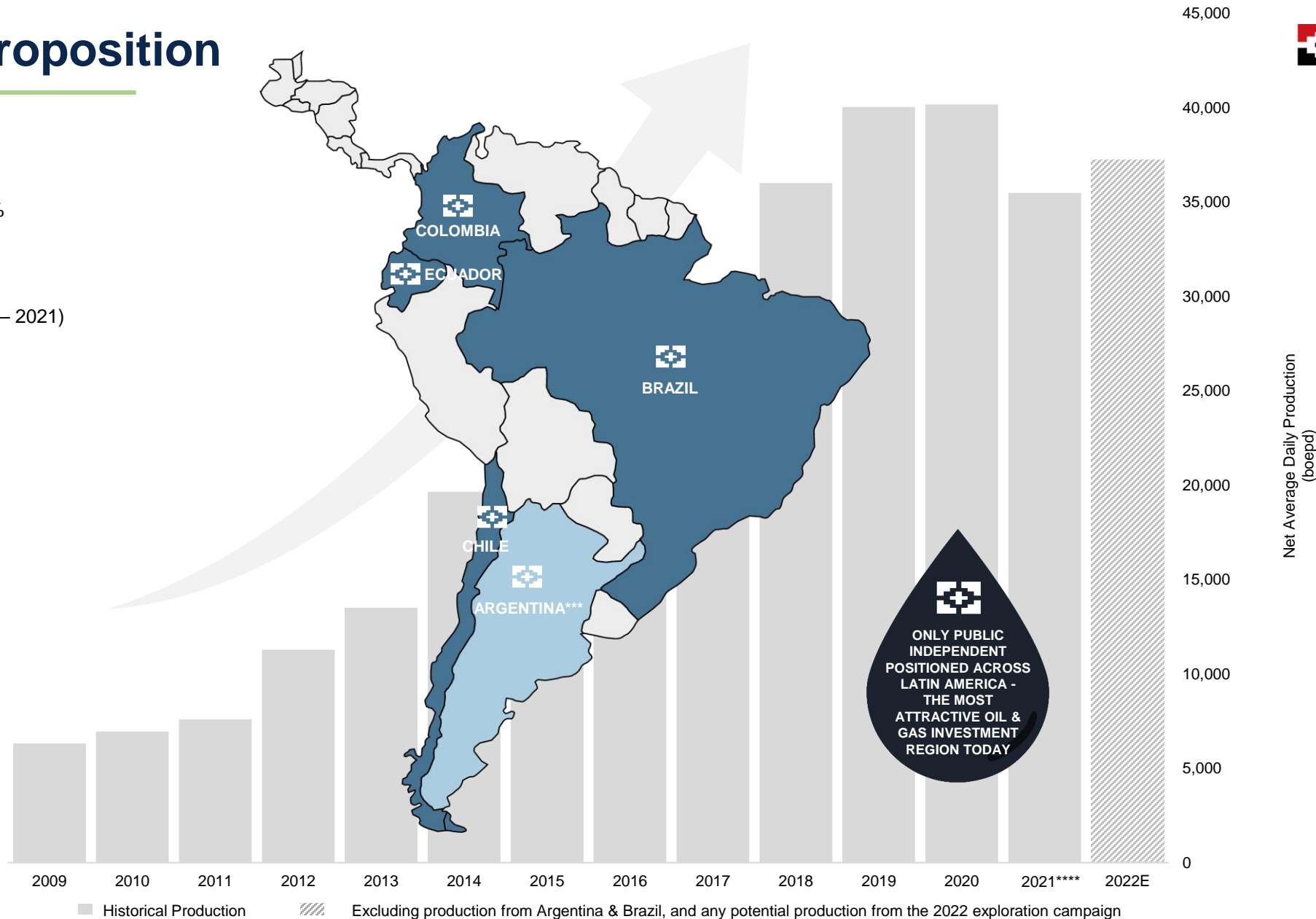
Focus on ESG
Leading Low Carbon Intensity
25-30% Below Industry Average
Majority Independent Directors



Total Shareholder Return
205% Over the Past 5 Years**



Partnering with Neighbors
Working together aligns
interests and provides
operational continuity



* GeoPark operated wells. ** As of 1-Feb-22. ***Divested in January 2022. **** 2021 is presented pro forma, excluding production from Argentina blocks divested in January 2022.

Mapping SPEED to SDG

 **SPEED** = ESG+ 

S
P
E
E
D



**LESS THAN
ONE BARREL** of oil spilled per
million bbl produced
(-35% in 2020 vs. 2019)

- COVID-19
RESPONSE**
- First Oil & Gas Company to Receive Bureau Veritas Certification
 - COVID-19 Committee: prevention, mitigation and care measures



Zero
fatal incidents

24+ mmbbl
of oil produced and transported
without third-party incidents

30,503
Risk analyses* performed in
Operations

* Total Recordable Incident Rate. **Lost Time Incident Rate. Source: GeoPark 2017, 2018, 2019 and 2020 ESG Report.

* Employees and Contractors, Internal Data, 2020.

A photograph of a yellow and black bird, likely a species of flycatcher, perched on a thin, light-colored branch. The bird has a bright yellow body, a black head, and a black beak. It is surrounded by lush green foliage, with some leaves showing signs of being eaten (small holes). The background is a soft, out-of-focus green. A semi-transparent white rectangular box is overlaid on the bottom half of the image, containing the word "ENVIRONMENT" in large, bold, green capital letters.

ENVIRONMENT

LEVERS OF OUR STRATEGY



Energy Efficiency



Cleaner Energy Matrix



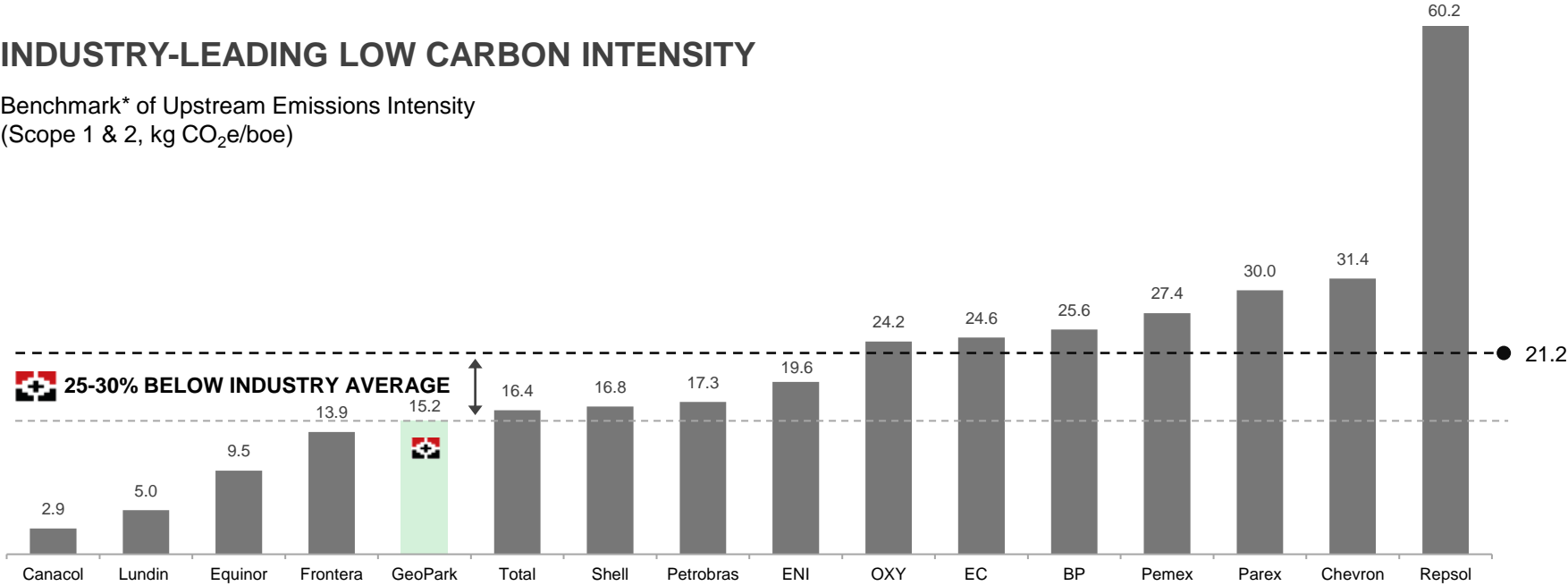
Mitigation



Compensation

INDUSTRY-LEADING LOW CARBON INTENSITY

Benchmark* of Upstream Emissions Intensity
(Scope 1 & 2, kg CO₂e/boe)



Short-Term
35-40%
Emissions intensity
reduction** by
2025 or sooner

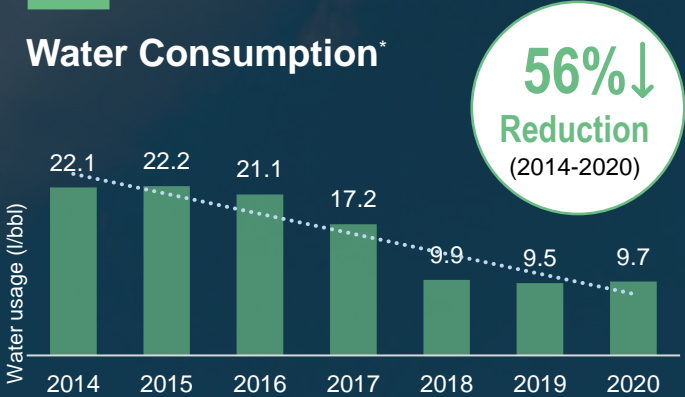
Medium-Term
40-60%
Emissions intensity
reduction** by
2025 - 2030

Long-Term
Net Zero
Scope 1 & 2
emissions by
2050 or sooner

* Source: Kearney analysis, GeoPark, companies' Annual Reports / Sustainability Reports. ** Scope 1 & 2.

RESPONSIBLE USE OF NATURAL RESOURCES

Water Consumption*



Zero

Direct water discharge to surface water courses

By 2025

Eliminate all surface water withdrawal in GeoPark's permanent operations



CERTIFIED
ENVIRONMENTAL
MANAGEMENT
SYSTEM

GHG EMISSIONS BY SOURCE

- Generators (60%)
- Fugitive emissions (21%)
- Boilers (12%)
- Motors (2%)
- Flaring (2%)
- Controlled emissions (2%)
- Contracted energy (0.2%)

Less than 5% of
GeoPark's GHG Emissions

Near-Term Actions

Construction of infrastructure to limit routine flaring and venting



VERIFIED CARBON
EMISSIONS

* Corresponds to Operations in Colombia.



SOCIAL



Focus on Our Neighbors

During 2020 we invested:

- **75%** local hiring
- **\$64 MM** acquired from local suppliers
- **\$35.9 MM** royalties paid
- **\$25.2 MM** income tax paid
- **73%** of social investment focused on rural areas
- **58,069** beneficiaries of social programs

42%

of the management team are women vs. 17% industry average*

100%

of employees own shares in the company



Officially acknowledged commitment to promote equality, inclusion and diversity

34%

of the company employees are women vs. 22% industry average**

13

scholarships for young women in Science and Engineering



Gender parity indicators reported through leading international framework

Our Culture

- Commitment to Human Rights
- Code of Ethics
- Compliance Program

Our Principles and Standards

- United Nations (UN) Guiding Principles on Business and Human Rights
- Principles of the UN Global Compact
- International Finance Corporation (IFC) Performance Standards
- International Labor Organization (ILO) Convention 169
- Organization for Economic Co-operation and Development (OECD) Guidelines



WORKERS

- No discrimination
- Zero tolerance for exploitation



NEIGHBORS

- Prior consultation with communities
- 92% complaints resolved in “Cuéntame”



NATURE

- Clean & healthy environment
- Citizen participation in decision-making



PARTNERS

- Contractors' due diligence
- 65% of service providers to be trained in 2022



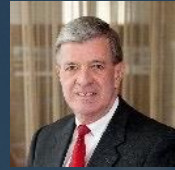
GOVERNANCE



**SYLVIA
ESCOVAR**
Independent Chair



- Valuable mix of private and public experience
- Former CEO of Terpel S.A
- Colombia's businessperson of the year (2017)



**ROBERT A.
BEDINGFIELD**
Independent Director

- Former Global Lead Partner at E&Y
- Director at NYSE-listed Science Applications International Corporation (SAIC)



**CONSTANTINE
PAPADIMITRIOU**
Independent Director

- 30+ years of investment experience
- CEO of General Oriental Investments S.A.



**SOMIT
VARMA**
Independent Director

- Former Global Head of Oil & Gas, at IFC
- Led World Bank's Global Gas Flaring Reduction Partnership
- Former Managing Director, Warburg Pincus Energy Group



**JAMES F.
PARK**
Co-founder CEO &
Director

- 40+ years of experience in upstream Oil & Gas business
- Pioneered commercial Oil & Gas production in Central America



**CARLOS A.
GULISANO**
Director

- Expert in Petroleum Geology and Geophysics
- 30+ years experience in Oil & Gas in YPF, Petrolera Argentina San Jorge, and Chevron, among others

Culture of Ethics and Compliance

- Ethics Line
- Compliance Risk Matrix:
Corruption, Fraud, Money
Laundering, Terrorism Financing
- Anti-Bribery, Corruption,
Sponsorship and Donations
Commitment
- Extractive Industries Transparency
Initiative (EITI)



Majority Independent
Directors and Female
Chair



Nomination & Corporate
Governance, Audit and
Compensation Committees
100% Independent



All Committees Chaired by
an Independent Director



Strengthened Committee
Charters



Adoption of Director
Overboarding Policy



Change of Independent
Auditors in 2020



New Share Pledge
Policy



One Share Class



Glossary of Terms



BBL	Barrel	MM	Million
Bloomberg Gender-Equality Index	Index that aims to track the performance of public companies committed to transparency in gender-data reporting	MMBBL	Million barrels of oil
Boepd	Barrels of oil equivalent per day	OECD Guidelines	Principles of corporate social responsibility accepted by all OECD member states through Investment Committee
CAGR	Compound Annual Growth Rate	Performance standards IFC	Standards on environmental and social impact generally required by Banks for investment
Carbon Intensity	CO2e emissions per barrel of oil equivalent produced	Principles of the UN Global Compact	Human rights, labor rights, environmental, and anti-corruption principles that corporations should work on
Cuéntame	GeoPark's system for handling requests and complaints	Scope 1 Emissions	Direct emissions from sources that are owned or controlled by the Company
EITI	Global initiative that promotes open and accountable management of oil, gas and mineral resources	Scope 2 Emissions	Indirect emissions from the energy generation purchased from third parties (electricity, heat or steam) that is consumed in operations
Equipares	Certification program to reduce inequality in the workplace	SDG	Sustainable Development Goals
Equivalent (CO2e) Carbon Dioxide	The number of metric tons of CO2 emissions with the same global warming potential as one metric ton of another greenhouse gas	SPEED	GeoPark's integrated value system that stands for Security, Prosperity, Employees, Environment, Community Development
GHG	Heat retaining chemical compounds that accumulate in the atmosphere	TRIR	Total Recordable Incident Rate
ILO Convention 169	An international standard for the protection of Indigenous peoples' rights	United Nations Guiding Principles on Business and Human Rights	Set of principles for corporations to implement in their respect of human rights
LTIR	Lost Time Incident Rate		



2020 SPEED REPORT



GEOPARK