

Integrated ESG Strategies:

The Business Case for Colorado

Susan Fakharzadeh
SVP, Sustainability & Government Affairs



Great Western
PETROLEUM, LLC®

Great Western: Company Overview



Great Western

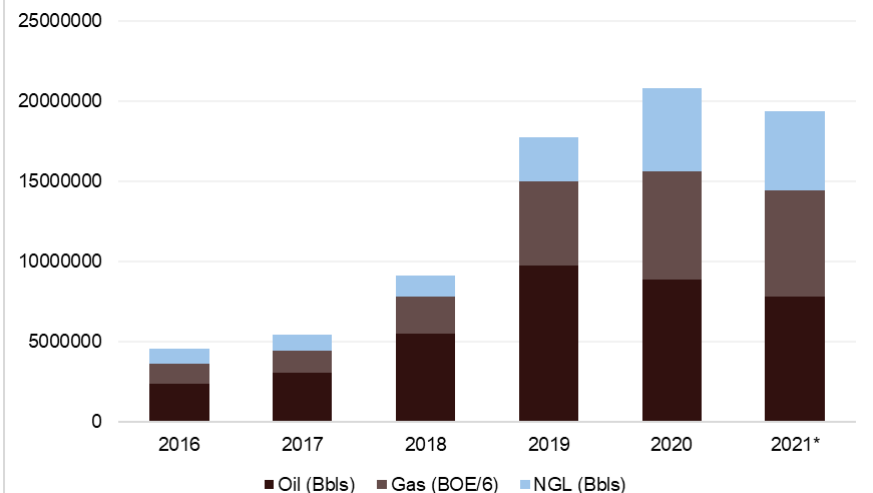
Great Western is the largest private operator in Colorado's DJ Basin, exploring and producing oil & gas in Adams and Weld Counties

- ✓ ~120 employees located in Denver and Longmont, CO
- ✓ Company has shifted from a vertical well operation to a pad-based drilling strategy, accessing 2 to 3-mile laterals & subsurface from one location

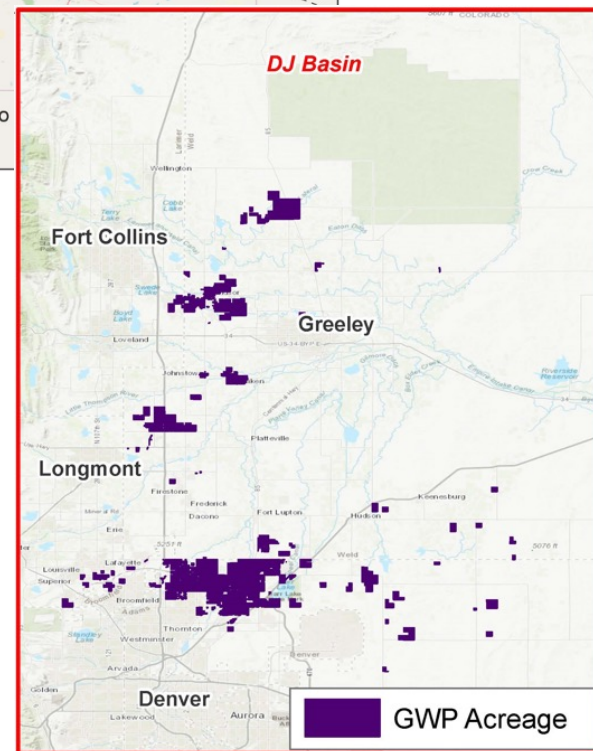
The Company has developed an ESG strategy, which has earned us the social license to operate while navigating some of the country's most challenging regulatory requirements. The strategy combines:

- ✓ Operational best practices to reduce emissions and overall footprint
- ✓ Initiating grassroots social and diversity programs
- ✓ Forward-thinking influence and integration of governance policies

Implementing ESG Strategies while Growing Production



Map of Colorado and Great Western



Colorado Evolution of Responsible O&G Operating

1. Colorado has been the focus of oil and gas activity, as well as regulation, culminating in landmark legislation in 2019 that launched a 2+ year overhaul of the regulatory environment, including:
 - ✓ An unprecedented transition in the state regulatory body (COGCC)
 - ✓ Extensive setback requirements, and the ability for local governments to supersede state regulatory authority with stricter requirements
 - ✓ Ongoing financial assurance requirements for new wells
 - ✓ Local government assessment / control over siting and surface impacts
 - ✓ State level agencies are regulating at a high-attention to detail regarding mitigation around potential impacts to environment and health/human welfare
2. Additional air quality control regulatory overhauls at the air quality control commission (AQCC) and regional air quality commission (RAQC) are ongoing
3. Quantitative and meaningful ESG metrics and operational practices are a requirement, not an option
4. Building a brand that puts Colorado and ESG in the forefront

COLORADO BORN.

COLORADO BUILT.

COLORADO COMMITTED.

WE ARE GREAT WESTERN.

WE ARE *#CommittedtoColorado*

Integrated ESG Philosophy



Great Western
PETROLEUM, LLC®

Environment



Goal: Reduce pollutants and emissions

- ✓ Global, regional, community
- ✓ Regulatory obligations AND voluntary reductions
- ✓ Reduce emissions to minimize GHG/ozone

Innovations in Facility Design

- ✓ Minimize visual footprint and tank emissions
- ✓ Electrification of compression— new pad design is 100% electric compression capable (vs 50% in traditional design)
- ✓ Eliminate pneumatic controller/pump emissions

LACT units on location

- ✓ Eliminating loadout emissions
- ✓ Reducing 60,000+ truckloads annually¹, reducing emissions and eliminating flaring while increasing safety

Third-party innovations

- ✓ Noise/sound/air monitoring
- ✓ Green completions such as electric frac fleets

Social



Transparency in operations

- ✓ Quarterly in-person town halls
- ✓ Bi-lingual, site-specific websites for current drilling pads
- ✓ Monthly stakeholder newsletter distributed to 5,000+, including elected officials, mineral owners, community partners

Grassroots presence and recognizing disproportionately impacted (DI) communities

- ✓ 7 locations in state-defined DI areas
- ✓ Up to 41% of the population in the counties where we operate is Spanish speaking², developing bi-lingual, site-specific community materials
- ✓ Site-specific partnerships with local schools

Identifying sites under Great Western's branded GREEN (Globally Reduced Emissions Extraction Network)

- ✓ Platinum, Gold, and Silver
- ✓ Ivey Pad branded as platinum with high-touch EHS focus

Governance



Influence on local and state policy decisions that codify best practices

- ✓ Party-status in all state-level agency rulemakings
- ✓ Directly influence local regulations with proven track record of best management practices

Creating a seat at the table through legislative contacts

- ✓ Presence on Senatorial Diversity in Energy Cabinet
- ✓ Active and engaged lobby efforts across all chambers

Accountability to ESG metrics through executive compensation

- ✓ 15% across-the-board quantitative emissions reductions
- ✓ 0 reportable safety incidents
- ✓ 2021 Sustainability Report

Aligning to state-wide regulatory agency emissions goals

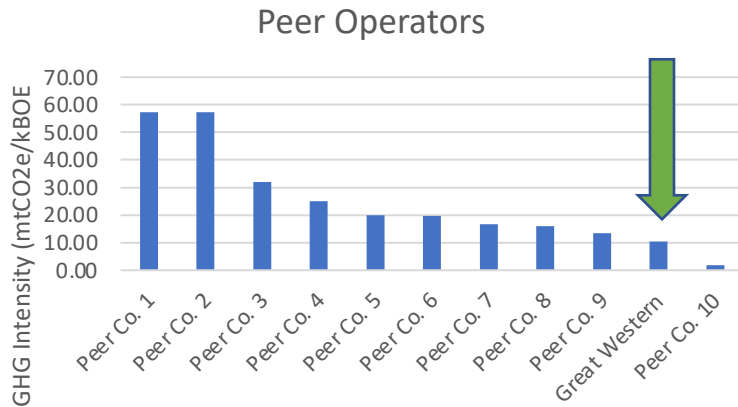
- ✓ Secured party status for 2021 rulemaking
- ✓ Aligning future design builds to statewide goals

1. Company KPI analysis, estimated truckload reduction 2019: 62,461 and 2020: 58,226.
2. US Census Bureau, Adams and Weld County, Colorado, 2019.

Quantitative Emissions Reductions

DJ Basin GHG Intensity

DJ Basin operators based on RY2020 emissions inventory.



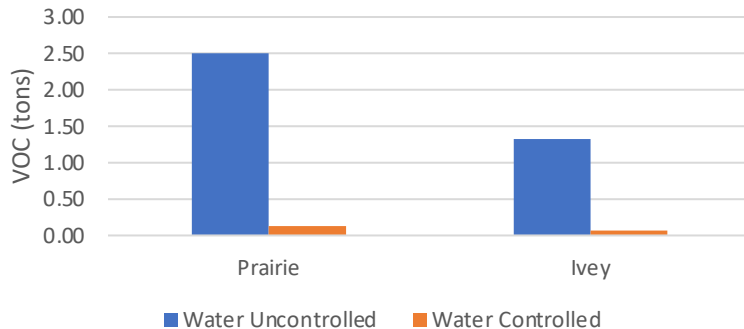
Reporting Year 2020

US EPA, Regulation 7, Part D, Section 5, reporting period July 01, 2020 to December 31, 2020.

Quantitative Emissions Reduction: Drilling and Completions

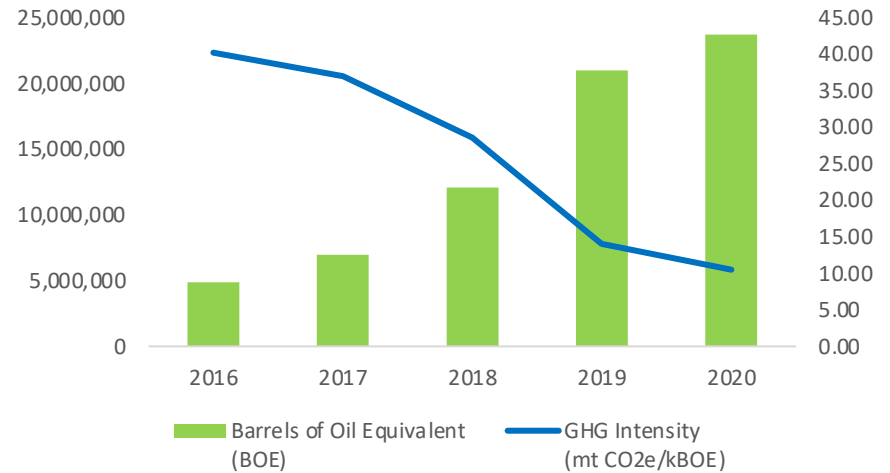
Hydraulic fracturing emissions reductions (flowback)

Flowback Water Emission Reduction



Company calculation.

Company GHG Intensity

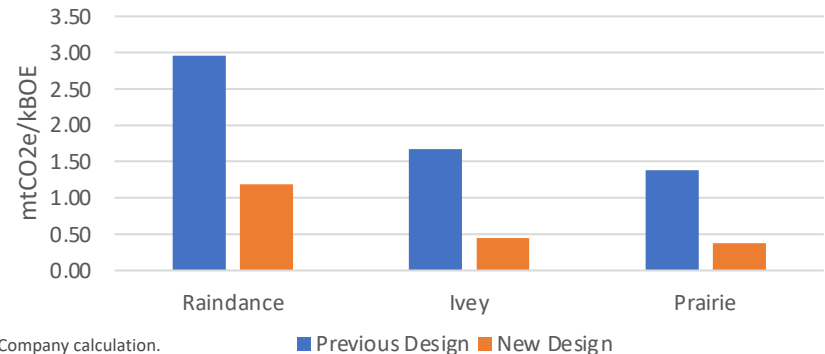


Company calculation based on annual reported CDPHE and US EPA data.

Quantitative Emissions Reduction: New Facility Design

Traditional Tank Design vs "tank-light" design for 2 operating facilities

Design Innovation



Company calculation.

Branding Integrated ESG

Ivey Pad: Adams County, Colorado

1. Great Western's Ivey Pad was the first to receive a Platinum status for ESG and recently came online, starting September 22, 2021. It is a 6.8-acre 10-well pad, with production of 5,000 boe/pd across 8 producing wells.
2. The Ivey Pad was engineered in conjunction with permit-specific best management practices and third-party networks to effectively reduce emissions and increase sustainability metrics. Below are key attributes:
 - ✓ Closed loop drilling system
 - ✓ Low-emission, electric facilities
 - ✓ Take-away and pipeline programs to reduce traffic and load-off emissions
 - ✓ Quadra-frac completions strategies, utilizing QuietFleet technology
 - ✓ Continuous noise and air emissions monitoring, with monthly reports published on the site-specific website
 - ✓ Construction of turn-lane (spring 2020) for increased site safety on existing public road
3. The Ivey Pad was also involved in several site-specific community engagement projects
 - ✓ Quarterly, public community meetings since May 2019
 - ✓ Strategic partnership with Colorado's Butterfly Pavilion, to enhance landscape plan to augment pollinating species over a three-year period after drilling/completions

ESG "Tiers" for New & Retrofitted Facilities

The Company assigns ESG "tiers" for each new pad that comes online:



Platinum

- ✓ Twin Rig / Quadri-frac completions
- ✓ Electric-assisted facility
- ✓ Fully-optimized emissions management, close-loop gathering system
- ✓ Site-specific community investment & engagement



Gold

- ✓ Twin Rig / Quadri-frac completions
- ✓ Electric-assisted facility
- ✓ Fully-optimized emissions management, close-loop gathering system



Silver

- ✓ Twin Rig / Quadri-frac completions
- ✓ Electric-assisted facility

Integrated ESG: Environmental



Great Western
PETROLEUM, LLC®

Environmental: Aligning ESG with Business Strategy

Technology & Innovation

Fly-over air emissions monitoring

Produced water pipeline

Expand plug & reclamation programs

Wildlife habitat projects

Enhanced landscaping and partnerships

Carbon offsets/state ERCs

Emerging technology deployment

Carbon sequestration

Community-based air monitoring

Engine electrification

ESG Metrics

Business Initiatives & Priorities

State/federal/agency rulemaking

Site-specific permitting

GHG intensity goals and metrics

ECD stack testing

ECD maintenance

ECD inspection/reporting

Air permitting (annual fees/risk)

Green bond qualification

Disproportionately impacted communities/DEI

Forward-looking policy

Investor confidence

Environmental: Aligning ESG with Business Strategy

Technology & Innovation

Fly-over air emissions monitoring

Produced water pipeline

Expand plug & reclamation programs

Wildlife habitat projects

Enhanced landscaping and partnerships

Carbon offsets/state ERCs

Emerging technology deployment

Carbon sequestration

Community-based air monitoring

Engine electrification

ESG Metrics

Business Initiatives & Priorities

State/federal/agency rulemaking

Site-specific permitting

GHG intensity goals and metrics

ECD stack testing

ECD maintenance

ECD inspection/reporting

Air permitting (annual fees/risk)

Green bond qualification

Disproportionately impacted communities/DEI

Forward-looking policy

Investor confidence

Technology & Innovation

Fly-over air emissions
monitoring

Business Initiatives & Priorities

State/federal/agency
rulemaking

Successful Integrated ESG Strategies:

- Avoid the risk of “greenwashing” by quantifying deliverables that are meaningful to YOUR stakeholders: not a one-size-fits-all game
- Targets business goals and allows for efficient capital allocation
- Compounds efficiencies: allocation of resources, compliance risk, capital
- Actualizes social capital to coalition-building and positive community influence
- Elevates your governance into external affairs with proactive technologies that drive policy, as opposed to reacting to legislated innovation

Sustainability. Solved.

Carbon sequestration

Community-based air
monitoring

Engine electrification

Forward-looking policy

Investor confidence

Integrated ESG: Governance

Relationship & coalition-building through delivered results



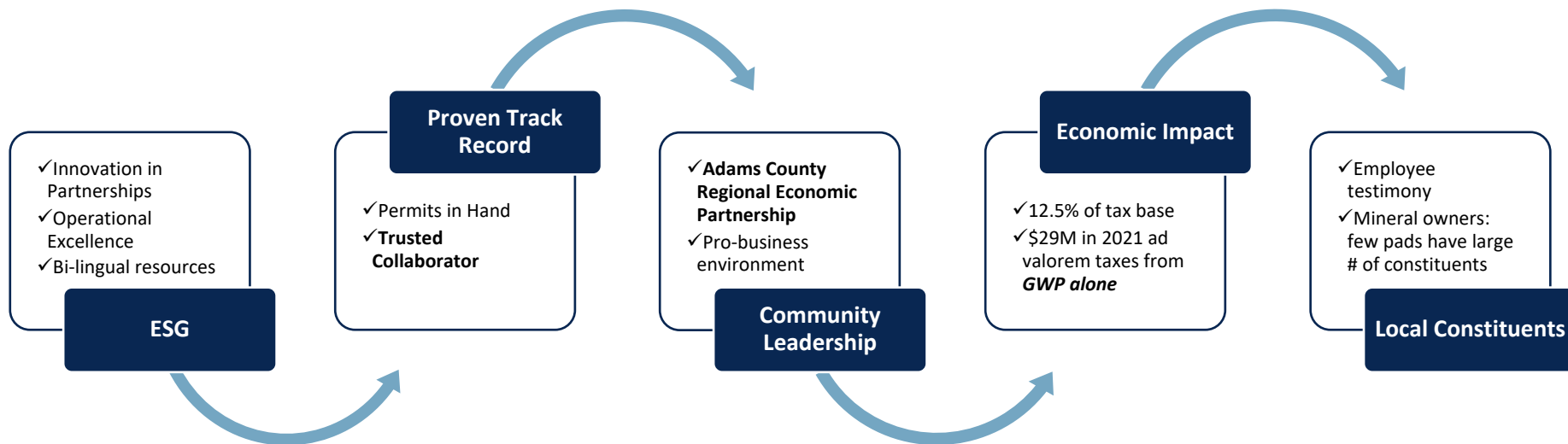
Great Western
PETROLEUM, LLC®

Governance: Policy Influence & Management



Great Western
PETROLEUM, LLC

Governance Process and Engagement with State and Local Agencies



Great Western has a well-established partnership with Adams County Regional Economic Agency

- ✓ Great Western hosted “State of the State” event with United States Senator John Hickenlooper
- ✓ Incoming President & CEO that supports responsible oil & gas operators as vital to the broader business economy
- ✓ The Company has a board vice-chair position, along with 2 of the 5 Adams County Commissioners



“We rely on Great Western’s team’s expertise when considering and implementing policy changes and we value their transparency throughout the regulatory process. The team has been an integral part of helping our county develop oil and gas regulations that are thoughtful, protective and appropriate for our part of the state and for our community.” – Mayor Jan Kulmann

Integrated ESG: Social

Or, It's Always Sunny in Adams County



Great Western
PETROLEUM, LLC®

Social Media: 2021



Colorado Rising is at Adams County Government Center. ...
January 4 · Brighton · 🌐

Support our neighbors!
Adams County Residents to Weigh in on Unlawful Ivey Fracking Project!
WHEN: Tuesday, January 5, 2021 | 9:30AM
WHAT: Adams County Board of County Commissioners will be holding a hearing to determine if Great Western Petroleum's Ivey fracking project meets the strictest standards of the law.
WHERE: Watch the virtual meeting through the county YouTube Channel:
<https://www.youtube.com/channel/UC7KDbF1XykrYlxfhEH5XVA>

HELP US STOP GREAT WESTERN PETROLEUM'S UNLAWFUL DRILLING IN ADAMS COUNTY!

CONTACT THE ADAMS COUNTY BOARD OF COMMISSIONERS NOW AND TELL THEM TO ENFORCE THE STRICTEST STANDARD OF THE LAW!
720-523-6358



If these new standards are not enforced, particularly the new setbacks of 2000' from homes, our communities will be at risk of toxic and dangerous industrial drilling. The Ivey site is within 1,300 feet of the closest home.

"Whenever possible, oil and gas locations should be as far away from homes as possible." -Steve O'Diriso, Adams County Commissioner

COLORADO RISING

👍❤️😬 21

2 Comments 7 Shares



Like



Comment



Share



 Colorado Rising is at Adams County Government Center. ...
January 4 · Brighton · 🌐

Support our neighbors!
Adams County Residents to Weigh In on Project!
WHEN: Tuesday, January 5, 2021
WHAT: Adams County Board of Commissioners will hold a hearing to determine if Great Western's project meets the strictest standards.
WHERE: Watch the virtual meeting on YouTube.
Channel:
<https://www.youtube.com/channel/UC...>

HELP US STOP GREAT UNLAWFUL DRILLING
CONTACT THE ADAMS COUNTY BOARD OF COMMISSIONERS
TELL THEM TO ENFORCE THE STATE OIL AND GAS ACT
720-5



If these new standards are not enforced, setbacks of 2000' from homes, schools, and churches will be toxic and dangerous industrial drilling sites just feet of the closest home.
"Whenever possible, oil and gas locations should be as far from homes as possible." -Steve O'Diristo, Adams County Commissioner

👍❤️😮 21

👍 Like 💬 Comment

THE DENVER POST

Energy | Adams County residents want drilling project...

Adams County residents want drilling project held up so new state oil, gas rules will apply

Great Western, county say additional protections have been added



Social Media: 2021



Great Western Petroleum

December 6, 2020 · 🌐

...

Presentando Ivey Pad: ¡la primera infraestructura totalmente ECOLOGICA (GREEN) de Platino que comenzará sus operaciones en el condado Adams este año! Hemos lanzado una flamante micro página web con más información de este proyecto innovador y único en su clase en la industria petrolera y de gas natural. Aprenda más de Ivey Pad y esta iniciativa GREEN visitando gwp.com/ivey.

See Translation



Social Media: 2021

Great Western Petroleum

December 6, 2020 · 🌐

Presentando Ivey Pad: ¡la primera infraestructura totalmente ECOLOGICA (GREEN) de Platino que comenzará sus operaciones en el condado Adams este año! Hemos lanzado una flamante micro página web con más información de este proyecto innovador y único en su clase en la industria petrolera y de gas natural. Aprenda más de Ivey Pad y esta iniciativa GREEN visitando gwp.com/ivey.


See Translation

Ivey Pad

El futuro del petróleo y el gas



f in 1001 17th Street, Suite 2000 Denver, CO 80202 | 303.388.0302 | info@gwp.com | EMERGENCY: 970.395.7640



Home About Us News Contact Us Investors Sustainability and ESG

El calendario del proyecto Ivey Pad está basado en el calendario dispuesto para hoy. Con cada sitio de perforación, el calendario estará sujeto a cambios.

Calendario de Ivey Pad

Semana del 30 de nov.	Instalación de la pared de sonido
Semana del 7 de diciembre	Comienza el ajuste predefinido
Enero del 2021	Comienza la perforación
Mayo de 2021	Comienza la finalización
Octubre 2021	Comienza la producción



Schedule is subject to change.

El proyecto polinizador para Colorado de Great Western

Proyecto Polinizador en Colorado de Great



Great Western se ha asociado con el Pabellón de las mariposas (Butterfly Pavilion), líder en el sector no lucrativo de zoológico de invertebrados y líder conservacionista, para lanzar el proyecto polinizador de Colorado, una restauración medioambientalista en Ivey Pad. El terreno circundante al proyecto fue alguna vez hace 100 años una pradera autóctona del lugar. El objetivo del proyecto polinizador de Colorado es asociarse con el Pabellón de las mariposas para crear una biodiversidad mayor y transformar una vez más este sitio del proyecto en una pradera

Social Media: 2021

Great Western Petroleum
December 6, 2020 · 🌐

Presentando Ivey Pad: ¡la primera infraestructura totalmente ECOLOGO comenzará sus operaciones en el condado Adams este año! Hemos l página web con más información de este proyecto innovador y único petrolera y de gas natural. Aprenda más de Ivey Pad y esta iniciativa gwp.com/ivey.

See Translation



Great Western Petroleum Newsletter

8.0302 | info@gwp.com | EMERGENCY: 970.395.7640

Investors Sustainability and ESG

Introducing the Ivey Pad



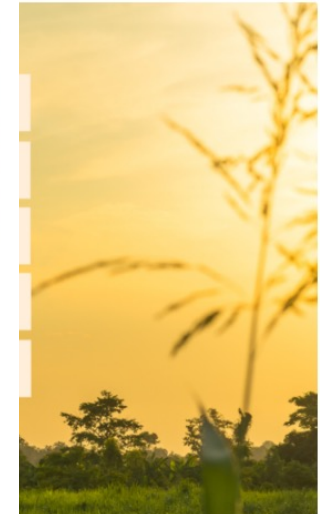
Dear Great Western Stakeholders,

Great Western is excited to begin operations at its very first **GREEN** platinum facility, the Ivey Pad in Adams County. The Ivey Pad will operate as Great Western's model of excellence, emphasizing how natural gas and oil operations should be executed as the industry continues to innovate into a more sustainable and accountable future.

Read on to learn how the Ivey Pad is debuting a new initiative, harnessing the industry's leading best management practices (BMPs), ensuring the community's safety and spearheading environmental restoration within Adams County.

Ivey Represents New Industry Best Management Practices

o de perforación, el calendario estará



stern

ciado con el Pabellón de las mariposas en el sector no lucrativo de zoológico de servacionista, para lanzar el proyecto una restauración medioambientalista rcundante al proyecto fue alguna vez :ra autóctona del lugar. El objetivo del Colorado es asociarse con el Pabellón ear una biodiversidad mayor y :este sitio del proyecto en una pradera

Social Media: 2022



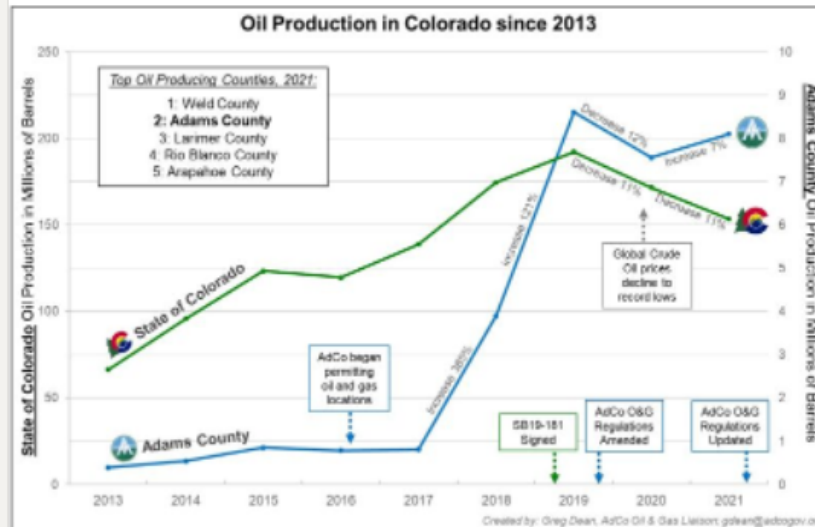
Gregory Dean
Oil & Gas Liaison at Adams County Government
[View full profile](#)



Gregory Dean • 1st
Oil & Gas Liaison at Adams County Government
5d • Edited •

Oil production in Adams County is thriving. AdCo has been the second largest oil producing county in Colorado since 2019 and production here increased by 7.2% to 8.1 million+ barrels (5.3% of all oil statewide) in 2021. This while state and Weld County production declined by 10.5% and 12% respectively. December 2021 and January 2022 have been the two highest oil producing months in County history, with nearly 950,000 barrels extracted each month.

Contrary to some information floating around, AdCo has approved 20 locations with up to 480 horizontal wells, just in unincorporated County alone and all on non-federal land (with several more pending final approvals). 180 of these have already been drilled by responsible operators. Currently there are an estimated 270+ additional laterals that can be drilled today in AdCo from already built pads without any further County approvals necessary, of which 125+ have spud, needing no other COGCC approvals. To learn more about energy production and regulations in Adams County, please reach out to me. [#energy](#) [#oilandgas](#) [#colorado](#)



Social Media: 2022



Gregory Dean

Oil & Gas Liaison at Adams County Government

[View full profile](#)

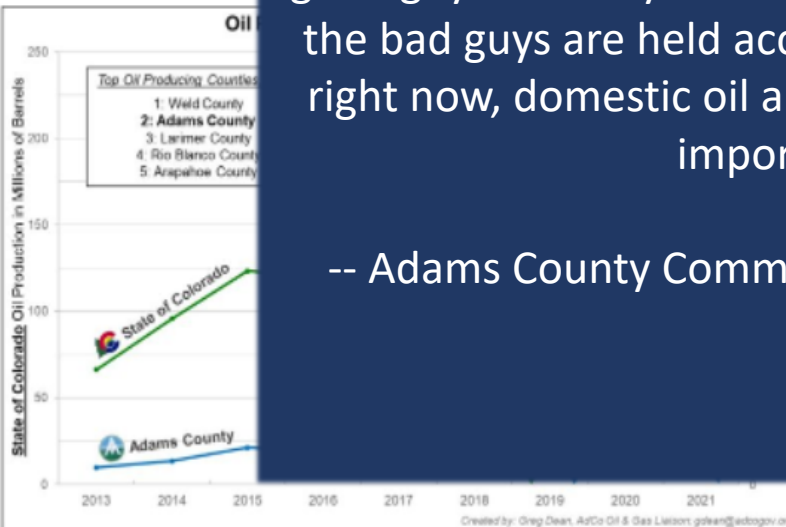


Gregory Dean • 1st

Oil & Gas Liaison at Adams County Government
5d • Edited • 🌐

Oil production in Adams County is the top producing county in Colorado with over 8.1 million+ barrels (5.3 million+ barrels) in January 2022. County production declined in January 2022 have been the same with nearly 950,000 barrels.

Contrary to some information, Adams County has up to 480 horizontal wells on non-federal land (with several already been drilled by residents). 270+ additional laterals that can be drilled without any further County regulations in Adams County. #colorado



COGCC Enforcement Hearing, March 9, 2022:

“Adams County has gone through a whole lot to raise the bar on health and safety of oil and gas production. We need to separate the good guys from the bad guys. Folks like Great Western and others have worked really well with us, and those good guys can only do so in our communities when the bad guys are held accountable. And of course, right now, domestic oil and gas production is very important.”

-- Adams County Commissioner Steve O’Dorisio

Ivey Pad: From the Residents' Perspective



IVEY PAD STATS

- 6 years in permitting
- 335 public comments at the COGCC application
**including one from New Hampshire*
- 181 attendees, Adams County information session
- 235 residents within ½ mile of the location
**closest home was built after the 2015 site approval by the local government*
- 24 individual contacts/87 to the state
- Site visited by state and county elected and regulatory officials

PUBLIC OPINION RESEARCH, 2022:

- Were you aware of activities prior to it beginning?
 - **YES: 73.6%**
- Did you attend our town halls?
 - **YES: 1.7%**
 - **“I decided not to attend because the communication that was sent out explained what was happening enough for my satisfaction.”**
- Did you find the microsite helpful?
 - **YES: 100%**
 - **“On-site video timelapse”**
 - **“I thought it was very comprehensive”**
- Please rate your experience with the project:
 - **60% of respondents rated the experience a 7 or higher**

The Business Case for Colorado



Great Western
PETROLEUM, LLC®

Great Western 2021 Sustainability Report

The Business Case for Colorado

Our Mission

Great Western's mission is to produce energy in a safe and responsible way to improve people's lives.

We do this by operating on a core set of values, in alignment with some of the nation's most rigorous regulatory standards, and through collaborative, transparent relationships with the communities where we live and work.

At Great Western, we are
#CommittedToColorado



A Letter From Our SVP of Sustainability

Dear friends,

On behalf of Great Western's senior management, employees and board of managers, it is with great pleasure that I present our 2021 Sustainability Report.

We are a small company, but we are 120 employees strong. We are Coloradans who have chosen to live and raise our families in this beautiful state. Our mission, our commitment to Colorado and our values drive us every day to do the right thing, in the right way, and innovate for a future with no limits. In this report, we're pleased to share the stories of how we are transforming the energy industry through the eyes and experience of the people doing it.

This report is more than just the measurement and quantification of the ways in which we minimize and mitigate our impact on the environment; it's more than the innovative projects and technologies that we deploy to make our product safer, more accessible and more efficient. It's about the resilience of working families in the face of unknowns; it's about the shared commitment to clean air, clean water and access to natural resources that make our world safe, clean and healthy.

At Great Western, we have often said our people are our greatest asset—but they are more than that. They are the fabric of our mission, the spark of our innovation and the reason why everyone goes home safe, every time.

That commitment to people knows no boundaries, and it is with those same values and perspectives that we seek to leave every project better than when we arrived, through innovative partnerships, technologies and best-in-class operational practices. That same commitment is what drives our spirit of transparency with the diverse and unique communities where we operate, ensuring that we bring answers to the questions that our stakeholders have, and work diligently to provide technical feedback and insights to ensure our regulations are protective, inclusive and thoughtful.

We celebrate and present this commitment through our innovation, by inspiring each other and our peers to tackle the big questions, the hard problems and by coming to work and returning home every day with pride and knowledge that our resources are produced safely and responsibly, as well as to improve people's lives.

Susan Fakherzadeh
Senior Vice President, Sustainability & Government Affairs



2022 Sustainability Report

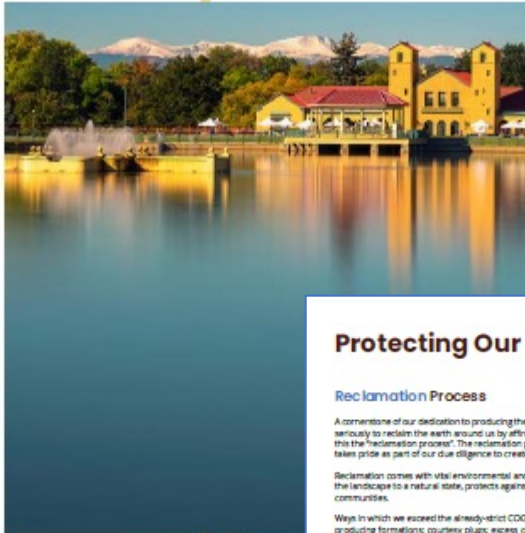


Protecting Our Water

A Colorado Division of Water Resources and CDOWC [joint report](#) showed that hydraulic fracturing accounted for approximately 0.08% of total water usage in Colorado in 2010. Agriculture made up 85.5%, municipal and industrial 7.4%. Great Western transports fresh water by pipeline to reduce tens of thousands of truckloads from our roads, reducing emissions and increasing safety in our communities.

Enhance Best Practices Management

- Pitless and closed-loop drilling systems are utilized
- Flowback and stimulation fluids are contained within tanks placed in secondary containment with downgradient tertiary perimeter berms
- Continuous off-site disposal of flowback water during completions operations to minimize on-location storage
- Engineered, lined secondary containment for storage tanks
- Perimeter ditches and berms designed for 100-year storm
- Facilities constructed with automated tank fluid level monitoring, facility pressure monitoring, and remote well shut-in capability
- In addition to daytime operations, Great Western has nighttime operations personnel that inspect the facilities around the clock.
- Routine and preventative maintenance are completed on all equipment to ensure it is kept in good working order



Ground Water Protection

Great Western worked extensively with regulatory agencies, environmental non-governmental organizations (NGO), local governments and utilities to craft and implement some of the most stringent groundwater protection regulations in the country.

Stakeholders Included:

- Colorado Oil and Gas Conservation Commission - COGCC
- Colorado Department of Public Health and Environment - CDPHE
- Arapahoe County Water and Wastewater Authority
- Aurora Water
- City of Brighton
- City of Commerce City
- East Cherry Creek Valley Water and Sanitation District
- Greenwood North Water and Sanitation District
- South Adams County Water and Sanitation District
- South Beebe Draw Metropolitan District
- South Metro Water Supply Authority
- Town of Castle Rock
- Town of Lochbuie
- United Water and Sanitation District

Robust Water Well Testing Program

Protection of Colorado's groundwater is one of Great Western's highest priorities. Water well sampling near oil and gas locations is conducted before drilling and throughout the life of the oil and gas wells, including after well abandonment. Great Western's sampling program goes even

100% of Great Western's fracture-stimulated wells are reported to [FracFocus.org](#).



Protecting Our Land

Reclamation Process

A cornerstone of our dedication to producing the cleanest molecule of oil and natural gas, we take our responsibility seriously to reclaim the earth around us by affirming that each site is restored to its functional ecosystem. We call this the "reclamation process". The reclamation process for formerly active wells is an area in which Great Western takes pride as part of our due diligence to create a better environment.

Reclamation comes with vital environmental and public benefits. The process protects our groundwater, restores the landscape to a natural state, protects against underground leaks, and ensures the safety of nearby homes and communities.

Ways in which we exceed the already-strict COGCC requirements in the reclamation process: excess cement over producing formations; concrete plug; excess cement coverage over groundwater (even potential groundwater); multiple plug/barrier between productive formation and groundwater

Learn more about our reclamation process on our [website](#).

Great Western reclaimed 67 wells in 2019, 81 in 2020, and 85 in 2021. Our 2022 program includes an additional 60-70 well reclamations.

- Innovative restoration projects: Butterfly Pavilion's Colorado Pollinator Project, robust landscaping plans/berms on locations, seeding with native grasses
- Robust sensitive habitat evaluations built into all facets of permitting including evaluations of aquatic features, endangered species, cultural resources, floodplains, water districts and other environmentally sensitive areas
- Evaluate all locations for active raptor nests and high priority habitats during all phases of operations
- Consult with Colorado Parks and Wildlife when active raptor nests or high priority habitats are present to implement mitigation measures and seasonal restrictions to preserve and protect critical habitats and species
- Topsoil studies to determine depth of topsoil to stockpile for reclamation to ensure proper reclamation/vegetation regrowth
- Active stormwater management program with over 1,000 total stormwater inspections conducted in 2021
- Land reclamation process including interim reclamation until final reclamation is put in place; returning the land back to how it was before we were there; returning the land to reflect pre-disturbance vegetation
- Minimize pad footprint through tank tie design
- Best-in-class well integrity safety practices which can exceed those required for onshore wells and incorporate offshore-level safety measures
- Propose and implement best management practices and procedures to protect and minimize adverse impacts to public health, safety, welfare, the environment and wildlife resources. These include Cumulative Impacts Plans, and Emergency Response Plan, a Flood Shut-In Plan, a Fluid Leak Detection Plan and a Stormwater Management Plan.
- Recycle and reuse including beneficial reuse of water-based drilling mud.

York Pad Reclamation

In Spring 2021, Great Western plugged and cemented an orphaned vertical well in Thornton, Colorado. Based on its proximity to homes and location under an existing basketball court, Great Western went above and beyond the current reclamation requirements. Great Western also maintained a dedicated microsite with an up-to-date timeline. Learn more about this reclamation project on our [website](#).



Colorado's People. Colorado's Voices.

Jason Davidson

Senior Environmental, Health & Safety Specialist

Tell us a little bit about what you do at Great Western.

I'm responsible for ensuring regulatory compliance with environmental programs, including baseline groundwater sampling, noise, plugging of legacy wells, reclamation, remediation, spill response and reporting, and wildlife management. I'm also a member of our Community Investment Team which I take great pride in.

Why do you like working at Great Western?

Before working at Great Western, I worked as an environmental consultant for several different operators. To me, Great Western is the most straight forward, honest, and ethical operator that I have worked with. Having been with the company for over two years now, I can confirm that my perspective was correct, and am proud of the work we accomplish across the state.

What do you enjoy about your job?

Every day is different. One day I'm out in the field overseeing a remedial excavation and the next I'm in the office talking about raptor nests with the Colorado Parks and Wildlife or pollinator habitats with the folks at the Butterfly Pavilion. It's very rewarding to work with such diverse outside groups and be able to live up to our commitment to stewardship in my everyday responsibilities.

How does Great Western go above and beyond in their reclamation?

We're working with the Butterfly Pavilion at a few of our Adams County locations to incorporate healthy environments for pollinators into our reclamation process. We're surrounding these locations with native trees, shrubs, and grasses to reestablish a native prairie-like habitat for bees, birds, butterflies, and other invertebrates. It's a really innovative program that is going above and beyond what any other industries are doing right now.

As a part of the Community Investment Team, what partnership are you most proud of?

Habitat for Humanity. I've taken part in several home building projects and I've learned so much; it's really inspiring to work alongside the volunteers that have dedicated their personal lives to the cause. It's great to see an organization that supports hard working families by providing them with a path to home ownership, knowledge and financial literacy that they can pass down through generations.



Successful Integrated ESG Strategies:

- Avoid the risk of “greenwashing” by quantifying deliverables that are meaningful to YOUR stakeholders: not a one-size-fits-all game
- Targets business goals and allows for efficient capital allocation
- Compounds efficiencies: allocation of resources, compliance risk, capital
- Actualizes social capital to coalition-building and positive community influence
- Elevates your governance into external affairs with proactive technologies that drive policy, as opposed to reacting to legislated innovation

Sustainability. Solved.

Questions? Let's stay in touch.



Susan Fakharzadeh
Senior Vice President, Sustainability & Government Affairs
720-220-6610 (cell/text)
sfakharzadeh@gwp.com