

PROP TECH AND CLIMATE TECH MEET



**REVOLUTIONARY
DATA ANALYTICS
& MARKETPLACE**

“THE ZILLOW OF LAND RESOURCES”



Data Solutions & Marketplace

for Land Resources



We Make Land Resource Deals More Efficient for Everyone

LandGate is the leading provider of information, data solutions, and an online marketplace for US commercial land resources: solar, wind, carbon, oil & gas, minerals, and water. The company helps developers, investors, real estate agents, and landowners understand energy and environmental resource values and connect on its online marketplace for everything land-related including solar, wind, carbon credits, minerals, and water. LandGate's platform applies its technology to provide leads, data, analytics, and web applications to substantially reduce costs and accelerate land transactions.

LandGate has a differentiated product advantage built on the digitization of land resource data and valuations. With LandGate's data solutions and web applications, developers, investors, and real estate professionals can, (1) run economic engineering studies in minutes, (2) access land leads and MLS listings, and (3) manage their leads in a land CRM web app connecting their team and Salesforce.

LandGate was founded in 2016 in Denver, Colorado. In 2019, LandGate received Series A funding from Rice Investment Group, a widely-respected energy technology investor. In 2020, LandGate partnered with the Realtors Land Institute (RLI), the American Association of Professional Landmen (AAPL), and the Texas Engineering Executive Education from the University of Texas at Austin. In 2022, LandGate received a Series B funding from one of the largest clean energy company in the world.





REVOLUTIONARY LAND RESOURCE DATA & ANALYTICS

Facebook & Google Ratings



+7
Million
Acres of Listings

+\$150
Million
in Closings

+30k
Buyers or
Investors



DEVELOPERS

AGENTS

INVESTORS

Online Software Used By

DISRUPTIVE LAND RESOURCE MARKETPLACE





Trusted by the World's Leading Companies & Institutions



MARKET SIZE OF DIFFERENT LAND RESOURCES IN 2021

SOLAR, WIND, CARBON, MINERALS, WATER

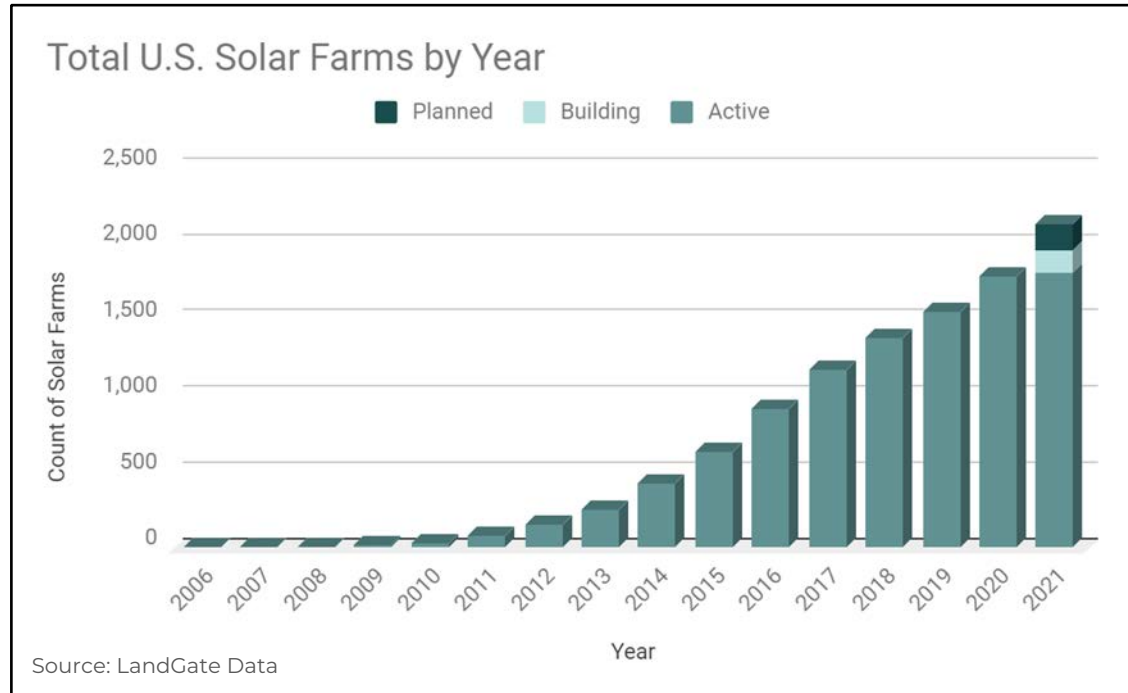


ACCELERATION OF THE ENERGY TRANSITION



NUMBER OF SOLAR FARMS INCREASING

- Rapid energy transition to renewable
- Investors seeking renewable energy opportunities

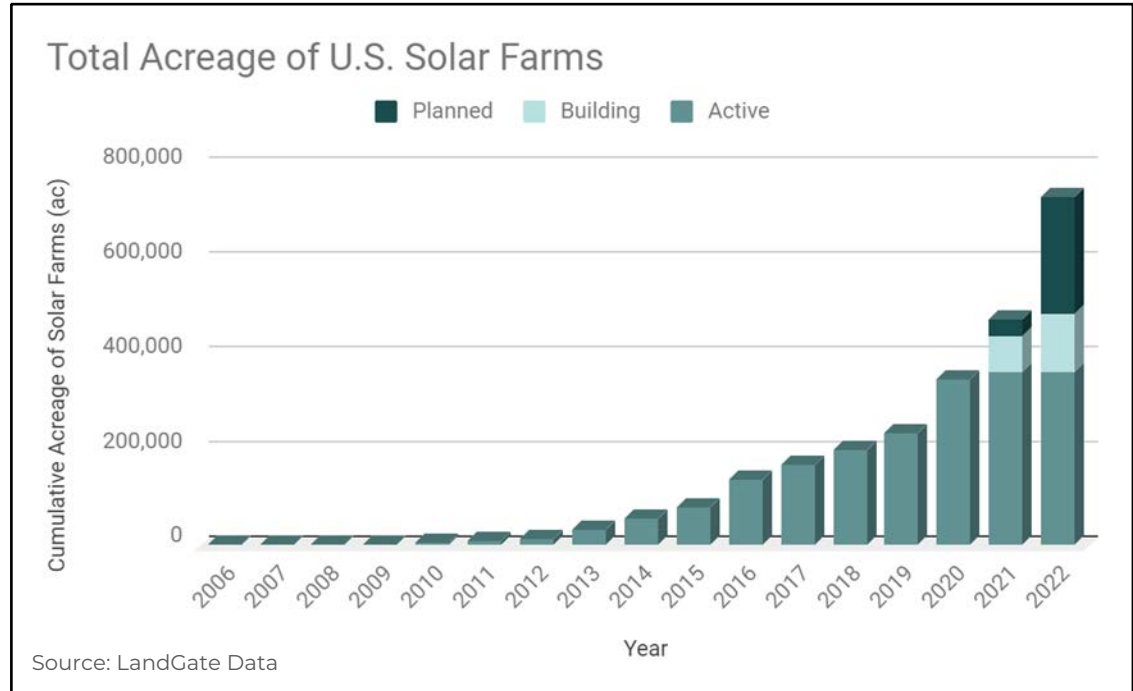


THE SOLAR AND WIND LAND GRAB

OPTIONS, LEASES, AND SALE OF LAND FOR SOLAR & WIND ACCELERATING



- Land grab for renewable energy accelerating
- Historically seen in oil & gas, repeats now for solar and wind

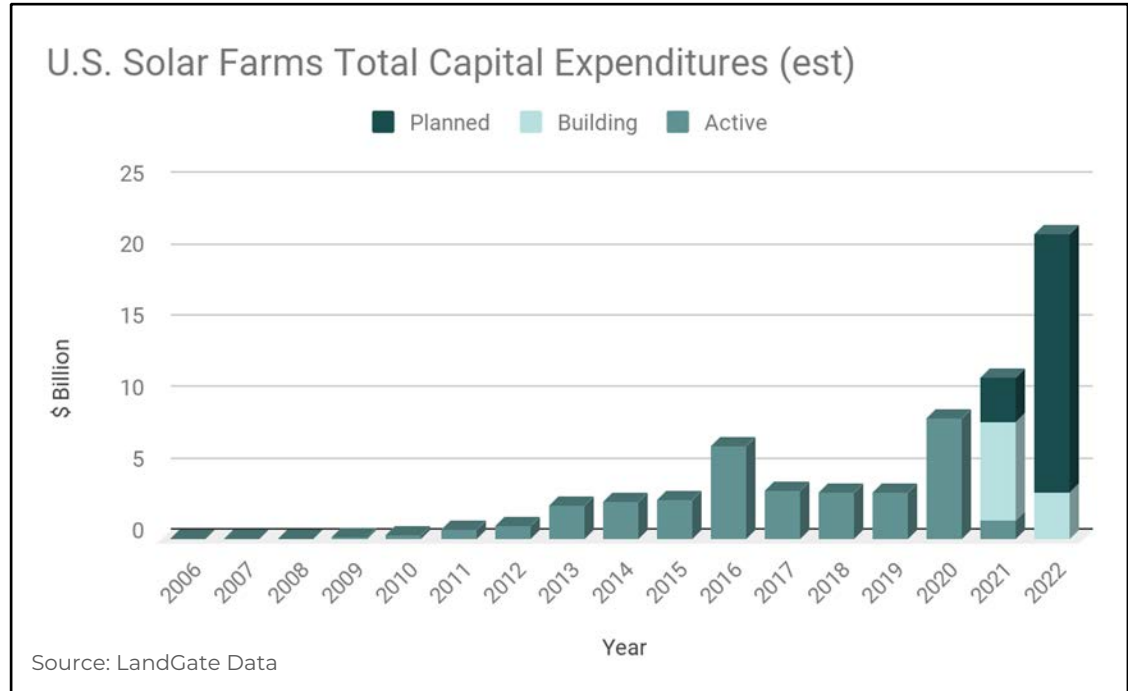


INVESTMENTS FLOWING INTO RENEWABLE ENERGY

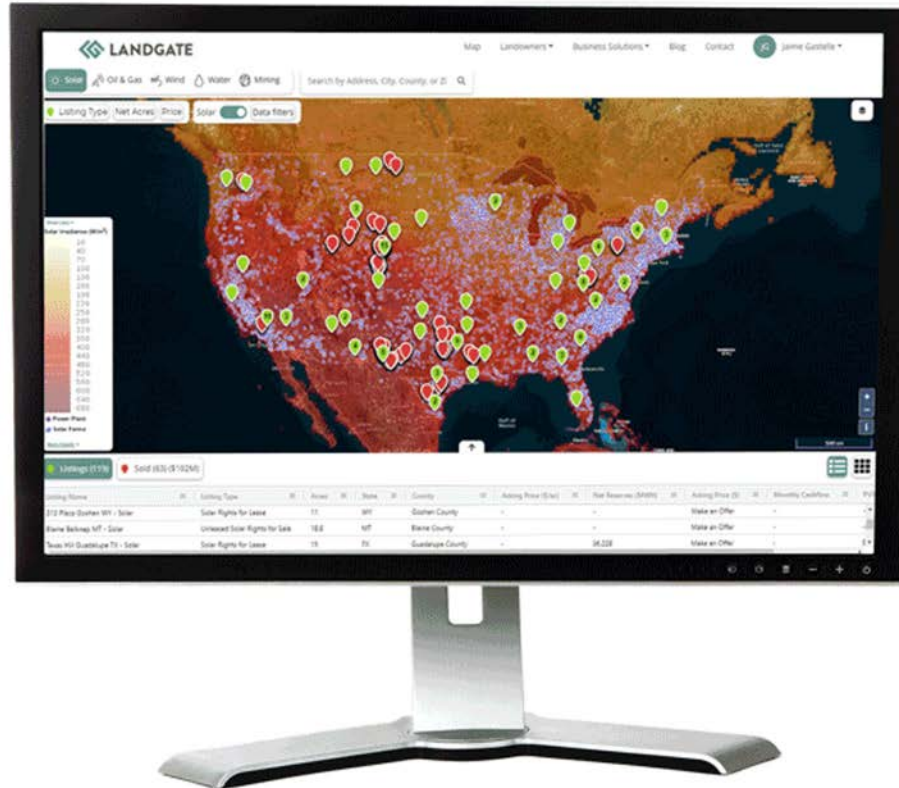
EXPONENTIAL EXPANSION OF CAPEX



- **Currently planned and building commercial onshore solar farms show capex >\$20B in 2022**
- **2017-2019 lower investments linked to politics**

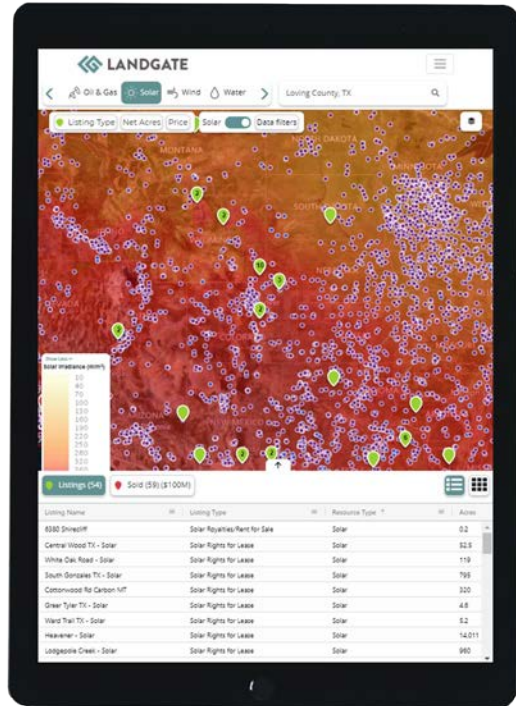


REVOLUTIONARY SOLAR, WIND, CARBON, MINERAL, WATER DATA & DEALS



PRIORITY ACCESS TO LEADS

GET HOT LEADS FROM LANDOWNERS READY TO CLOSE

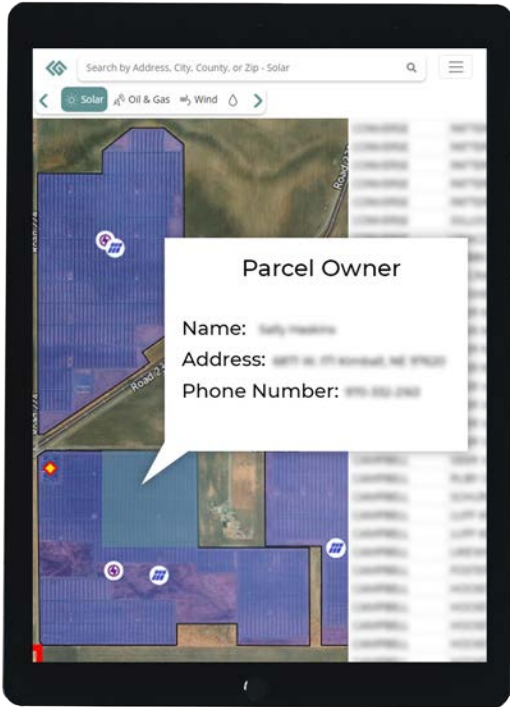


- Get Alerts Matching Your Buy Criteria
- Set up your buy criteria and area of interest
- Receive exclusive alerts to new listings before they get marketed
- Be the first to access actual deals, not just leads with sellers/lessors ready to close
- Save time & money
- Lower your acquisition costs, no need to spend sourcing leads



HIGH VALUE SOLAR LEADS

SURFACE OWNERS CONTACT INFO BASED ON YOUR BUY CRITERIA

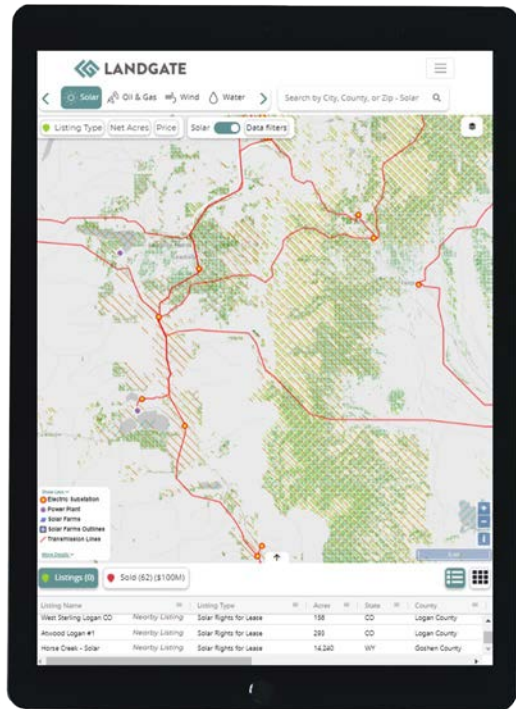


- Access the most comprehensive database of surface owner's contact information based on your buy criteria
- LandGate's platform constantly receives information from active sellers who claim ownership of their parcels on our map
- LandGate completes this database with the most comprehensive owner data from our partner, CoreLogic
- Focus on the most profitable areas by combining your lead search with LandGate's unique solar data
- Immediately contact high value sellers in your area of interest
- 100% coverage of solar farm outlines in the U.S. including farms without satellite imagery



ELECTRICAL NETWORK, INFRASTRUCTURE

ELECTRIC SUBSTATIONS, TRANSMISSION LINES, DISTRIBUTION LINES

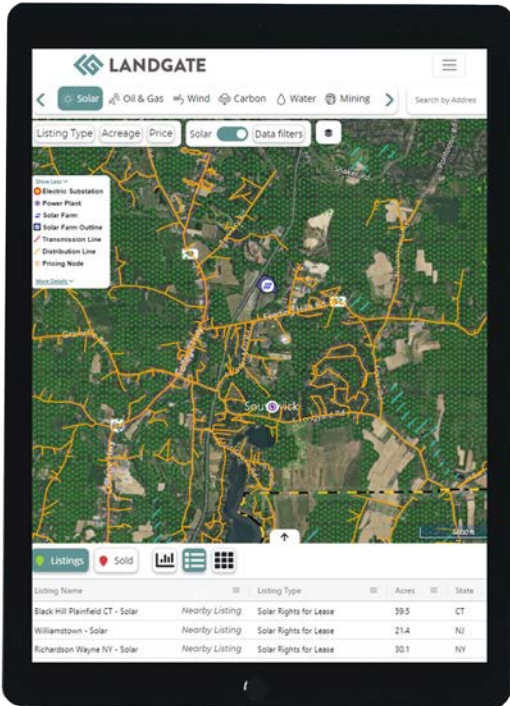


- Distribution lines
 - 90% coverage
 - Voltage, Capacity, Power Flow, Generators Connections
- Transmission lines
 - 100% coverage
 - Owner, Status, Voltage, Capacity, and Substation Connection, Power Flow, Hosting Capacity
- Substations
 - 100% coverage
 - ID, Status, Max Voltage, Lines, Type, Connections & Stats, Power Flow, Hosting Capacity



DISTRIBUTION LINE DATA

GET UNIQUE DISTRIBUTION LINE DATA THAT COVERS THE ENTIRE US

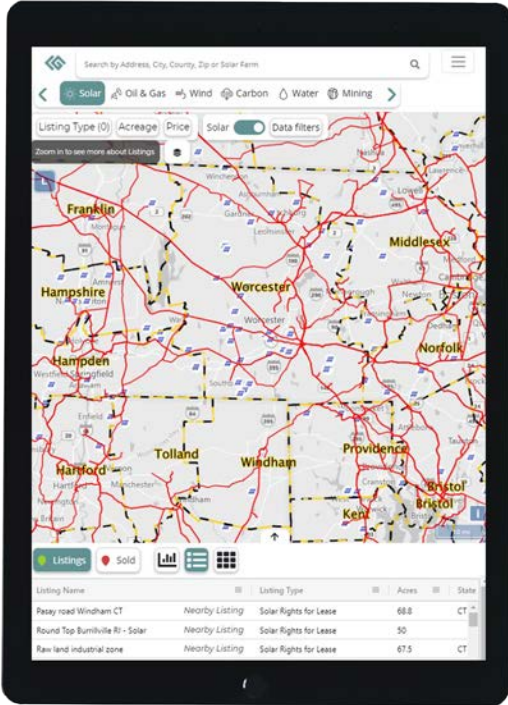


- Voltage
- Hosting capacity
- Interconnected DER
- Queued DER
- Connected Generators



TRANSMISSION LINE DATA

GET REVOLUTIONARY TRANSMISSION LINE DATA

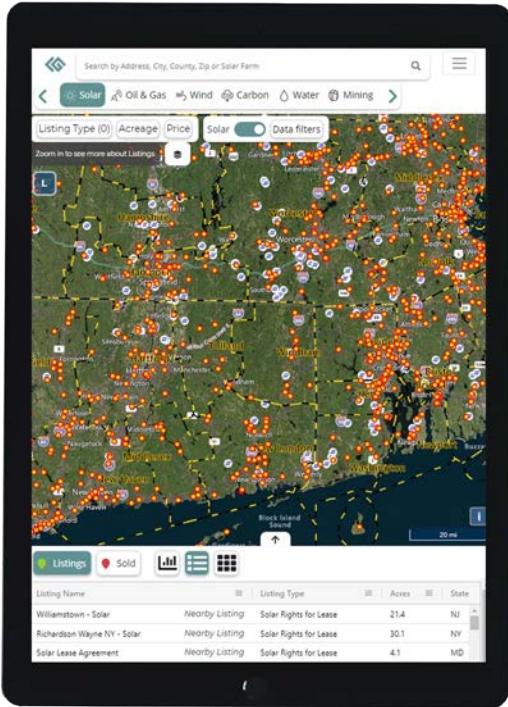


- Owner, Status
- Voltage, Capacity
- Max capacity
- Hosting Capacity
- Connected Substations



ELECTRIC SUBSTATIONS

GET PROPRIETARY ELECTRIC SUBSTATION DATA

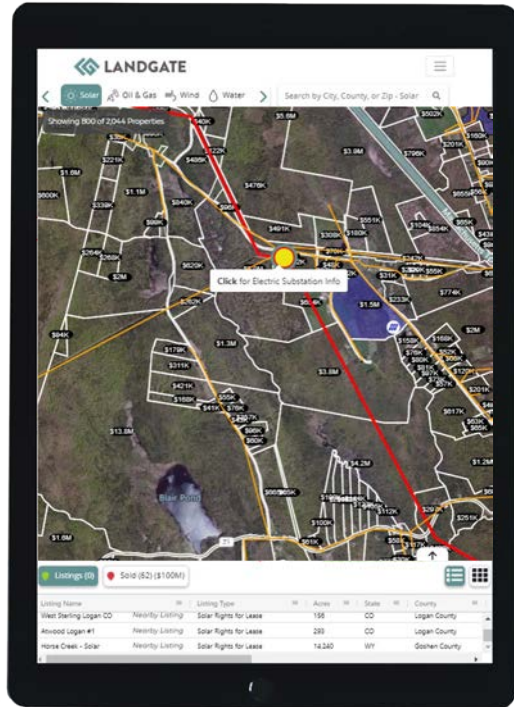


- Substation ID, Status
- Max Voltage
- Lines, and Type
- Connected Generators
- Interconnection queues
- Hosting Capacity



SUBSTATION HOSTING CAPACITY

EXAMPLE #1



Blandford 115-23 kV Substation

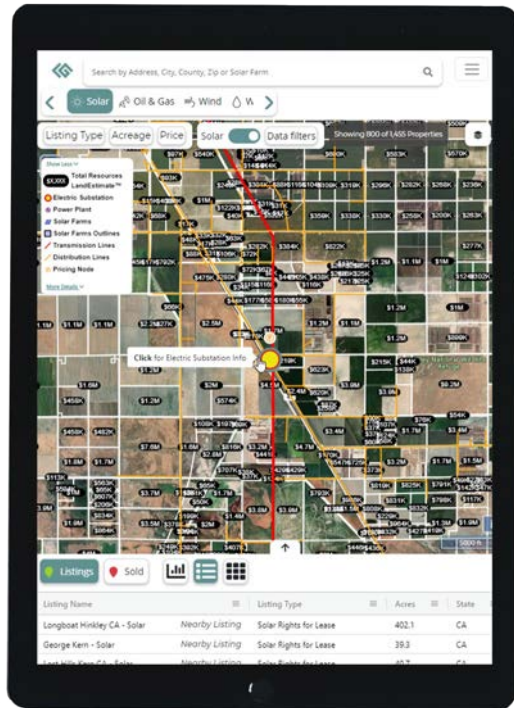
NE-ISO; Eversource

- Hosting Capacity: 0.05 MW
- Interconnected DER: 9.05 MW
- Queued DER: 15.12 MW
- DER Capacity Limit: 24.22 MW



SUBSTATION HOSTING CAPACITY

EXAMPLE #2



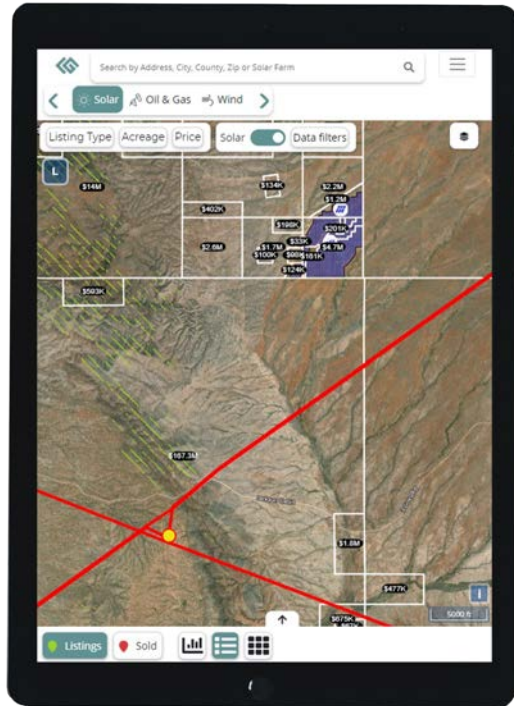
Alpaugh 115-12 kV Substation CA-ISO

- Hosting Capacity: 1.78 MW
- Interconnected DER: 2.26 MW
- Queued DER: 3.85 MW
- DER Capacity Limit: 7.89 MW



HOSTING CAPACITY, LOAD

AVAILABLE CAPACITY, POWER FLOW IN TRANSMISSION LINES, SUBSTATIONS, AND DISTRIBUTION LINES

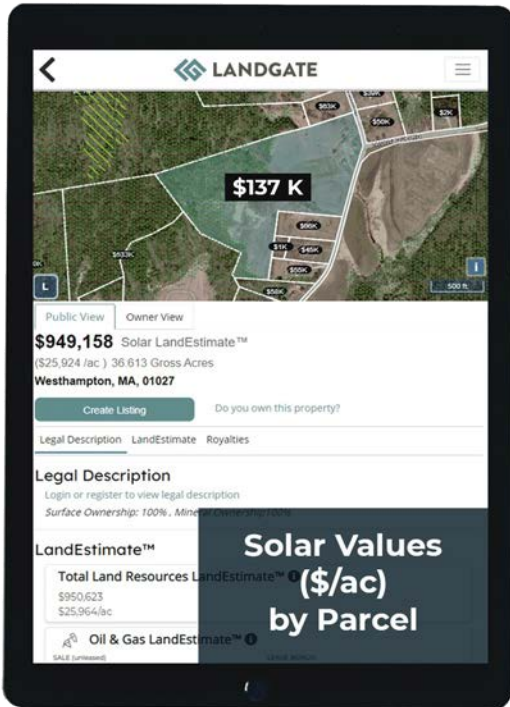


- One of the key drivers of land value for solar
- Available capacity at the transmission lines and substations
- Power flow, and max capacity
- Unique dataset covering the US



LAND MANAGEMENT CRM

SEARCH PARCELS AND MANAGE LEADS SHARED WITH TEAM

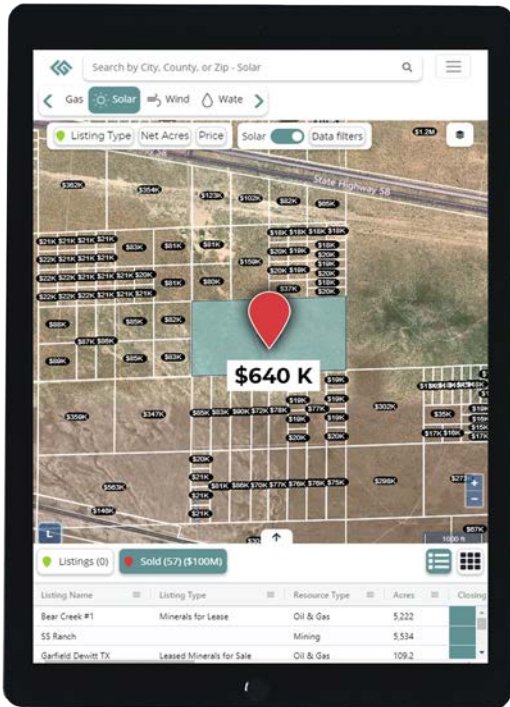


- Land management CRM tool connected to Salesforce
- Save your own assets, the parcels/tracts you are negotiating, write notes shared across your team
- Save these parcels/tracts with notes directly into your salesforce CRM



DEAL COMP DATA

NON-PUBLIC SALES AND LEASES OF LAND RESOURCES



- Access private land resource transaction prices and details
- Lease details (lease bonus and negotiated royalty/rent)



ENERGY PRICING DATA

PPA, LMP, CONGESTION, LOSSES & DEMAND



- PNodes, LMP data
 - 100% coverage
 - Key indicator of local energy demand, congestion and losses occurring within a system
- PPA data
 - 100% coverage
 - Insights to the value of renewable energy to private markets
- State and Local Incentives
- Accurate energy pricing data is crucial for evaluating land resources wind and solar economic viability



BUILDABLE ACREAGE FOR SOLAR DEVELOPMENT NET OF VARIOUS EXCLUSION ZONES

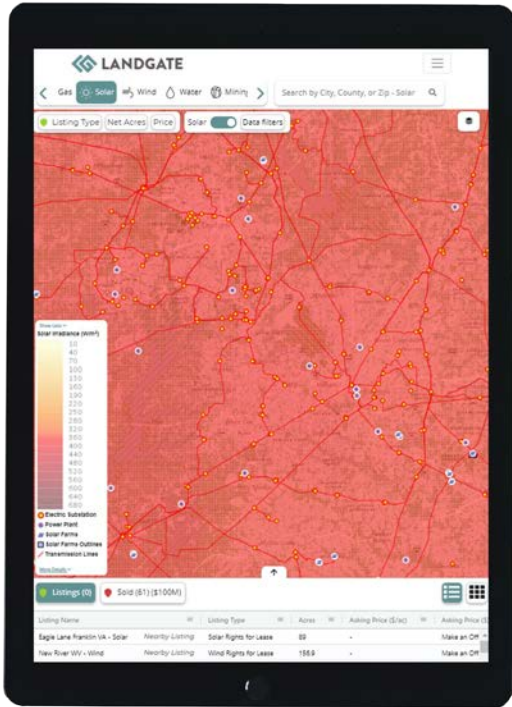


- Buildable Acreage is Gross Acreage Net of:
 - Topography
 - Dwelling
 - Flood
 - Waterway
 - Wilderness
 - National Park
 - State Park
 - Hazardous Site
 - NFS Land Unit
 - Grassland
 - More



3D SOLAR IRRADIANCE DATA

UNIQUE AND PROPRIETARY SOLAR DATA

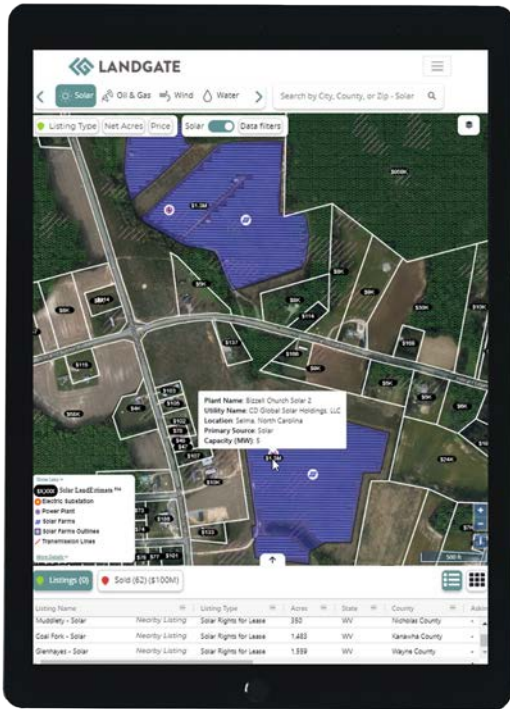


- 2D solar irradiance gives the exact watts per square meter for any location in the United States
- 3D solar irradiance is a unique dataset produced by LandGate. 3D irradiance takes topography and the sun incidence angle based on latitude into account. It is higher resolution than the 2D irradiance.



SOLAR FARM LOCATIONS AND ECONOMICS

UNIQUE AND PROPRIETARY SOLAR DATA



- Solar farms across the United States with status, capacity, annual production, and acreage
- Solar Farm outlines including current sites, under construction, and planned sites
- Determine the economic viability of any area for solar development
- Daily Production, Capex Data, Market Data (LMP and HUB), Incentives and more



DATA LICENSING PLANS

